

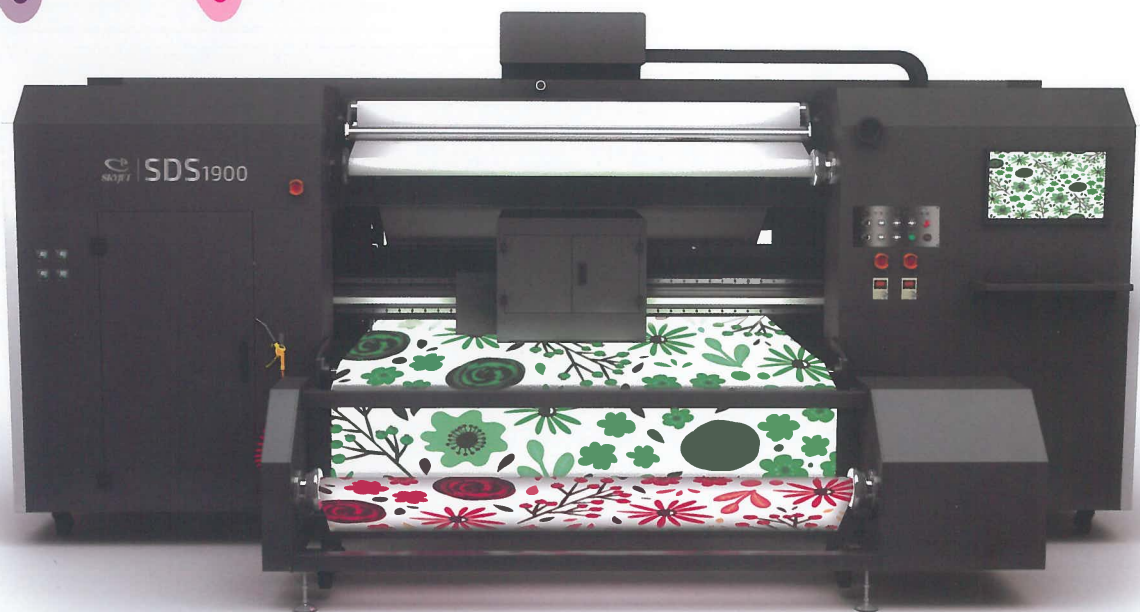


Global First Origination

SDouble technology " One Molding "

SKYJET SDS1900

Textile Double Side Digital Printer



*New
Product
2019*



Leader of Global
Double Side Printing Machines

To comparison with traditional textile printing way, Digital printing color shows obviously defective workmanship.

Obviously color difference between front and back of media and some technical defect is easy to happen when sewing;Textile has stripe spots, spot and bigger color pattern is not homogeneity. For solving the problem, double sided textile printing is the best solution.

Double sided textile one shape printing technology combines traditional and digital technology together in One.

SDouble technology combines traditional with digital textile printing crafts to create World Unique Double Sided One Shape Printing Technology. The technology can print textile double sides at one time to make textile no color difference between front and back,accurate alignment, printing dark color and spot color perfect.The technology can meet "One Time"double sided textile printing needs of silk,cashmere, wool, cotton and lending fabric.etc and make "same pattern same color, same pattern different color, different pattern different color"art come true.



Craft type

Same pattern
same color

Same pattern
different color

Different pattern
different color

World patent (SDouble) is our core competence

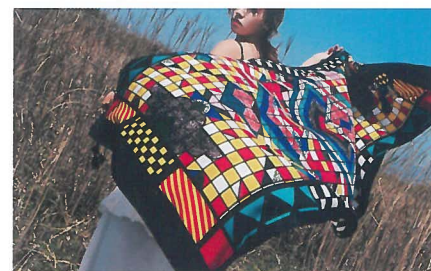
"SKYJET" has 15 year double sided printing technology development experience and has got the double sided printing technology patent in China,Japan,USA,EU etc. To reduce worker intervened during double sided textile printing, we developed photographic automatic recognition&alignment print technology to upgrade the efficiency of print. The technology can make permeable and impermeable fabric come true.



Double sided textile printing application

• Silk scarf

Double sided textile printing technology can replace flatbed textile machine. Double sided textile printing not only can achieve same pattern with same color, but also same pattern with same color effects. It is best art solution of silk scarf.



• Wool textile

The hardest media for digital textile printing is wool. Wool flakes will stop the effect of ink penetration to fiber and also affect homogeneity of evaporation. Wool textile looks dark and tint without homogeneity. Double sided textile printing prints double sided of textile at same time to make wool textile looking and touching perfect.



• Garment textile

Silk scarf is easy to reveal the other side and if back side silk color is lint, then it looks bad. "same pattern with same color" art is solving the problem. Using "different pattern with different color" art to make a hard copy textile for brand owner by different design of front and back side art.



• Digital dye

Digital printing and dyeing industry media output is far more than textile media, but most important thing is dye vat pollution is seriously rectified and reformed by environmental protection of government. Double sided digital double sided printing can make "Digital dyeing" come true which is suitable for small orders and cut 50% sewage discharging, besides, Double sided textile printing technology can replace handwork batik, therefore, Digital batik can solve batik art and clothes problems.



• Home textile

Most of home textile products needs double sided color. For example, Most of export orders like "same pattern with different color" double sided color bed sheet and tablecloth to upgrade its value. "same pattern with same color" curtain and screen can upgrade artistic taste. And till now, Towel, handkerchief, flannelette blanket etc. are waiting for a solution of double sided color.



• Textile jeans

Jeans is one of yarn dyed fabric. It uses special washes and distressing methods to make old affection, but sewage discharge has been restricted since environment protection. Double side technology makes the front wash or printing effect, and yarn dyed effect on the back, this can make jeans more fashion and high level.



[Technical Specifications]

- Frame:** 2 printing carriages frame to print double sides one time.
- Synchronous print:** Synchronous data transfer control can assure 2 printing carriages print.
- Automatic alignment:** Constantly collecting textile images, automatic modify alignment errors.
- Tension take up & feed:** Its structure and main roller synchronous moving to keep constant tension.
- Tension data:** Different fabric can set and save different data sheet.
- Belt cleaning:** Automatic print linkage with belt cleaning device up & down.
- Print head maintain:** Whole sealing moisturization, ink purging, head shave device to keep print head stable.
- Height adjustment:** Automatic printing carriage height adjustment.
- Control system:** Industry level PLC control system to keep steady.
- Ink supply:** Negative pressure ink supply system , wriggle pump can reduce the bubble, abnormal ink supply protection system.
- Textile media:** permeable suitable thickness media and heavy impermeable media.
- Air:** same pattern same color, same pattern different color, different pattern and different color.
- Alignment data:** Non recognition information image, manually input alignment data.
- Frill check:** sensor will check the fabric on belt, print will stop for alarm when frill happens.
- Print note:** automatic note all print job.
- Ink cost statistics:** Automatic calculate ink use level and the print cost.

[Technical Parameter]

CE MODLE NAME	SDS1900	
Frame	Upper Flatbed+down belt (include camera)	
Printing Width	1800mm	
P.H.Type	KYOCERA KJ4B	
P.H.No.	MAX 8 Heads	MAX 16 Heads
Color	8 colors (C、M、Y、K、LM、LK、BLUE、ORANGE)	
Speed	2PASS(605×600) 90m ² /h	2PASS(605×1200) 90m ² /h
	3PASS(605×900) 60m ² /h	3PASS(605×1800) 60m ² /h
	4PASS(605×1200) 45m ² /h	4PASS(605×2400) 45m ² /h
	6PASS(605×1800) 30m ² /h	6PASS(605×3600) 30m ² /h
	8PASS(605×2400) 23m ² /h	8PASS(605×4800) 23m ² /h
Media Length	100m	
Media Thickness	10mm	
Textile Type	Silk,cashmere,wool,cotton,chemical fiber,blended fabric etc.	
Ink Type	Ractive dye ink, Diperse dye ink, Acid dye ink, Pigment ink	
RIP Software	Caldera Textile or Neostampa optional	
Work Environment	Humidity20-28°C,temperature50-70%	
Power	380V , 50/60HZ,(Printer 6.5KW, Drying 8KW)	
Dimension	4865mm×3100mm(Body2165MM)×2315mm	
Weight	3250kg	



SKY AIR-SHIP DIGITAL PRINTING EQUIPMENT CO.,LTD

Add : #5,A-2,No.3 Street,Shenyang Economy & Technolgy
Development Zone,China.110141
Tel : +86-24-25813966 25818868 Fax:+86-24-25901127
E-mail : skyjet@skyair-ship.com



www.skyair-ship.cn
www.skyair-ship.com
400-024-5552